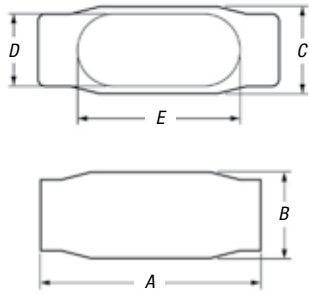
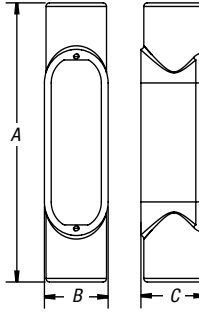


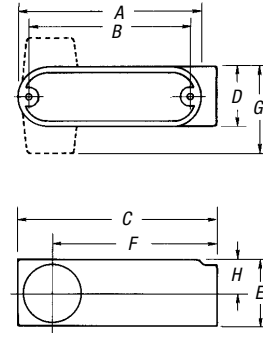
Conduit Bodies and Covers



LL Form 7 and Form 8



LL Series 35



LL Threaded Aluminum and EMT Aluminum

LL Form 7 BlueKote® Conduit Bodies



CAT. NO.	HUB SIZE	DIMENSIONS (IN.)					CU. IN.
		A	B	C	D	E	
LL17	½"	4.60	1.40	1.45	.95	3.20	4.0
LL27	¾"	5.25	1.60	1.65	1.15	3.80	6.6
LL37	1"	6.00	1.90	2.60	1.35	4.55	10.6
LL47	1¼"	6.45	2.30	3.05	1.80	5.00	18.6
LL57	1½"	7.90	2.60	3.80	2.05	5.45	26.4
LL67	2"	8.30	3.20	4.25	2.45	6.40	51.0
LL77	2½"	10.55	3.65	5.80	3.60	8.40	102.0
LL87	3"	10.55	4.40	5.80	3.60	8.40	132.0
LL97	3½"	12.85	4.90	7.03	4.55	10.25	210.0
LL107	4"	12.85	5.40	7.03	4.55	10.25	243.0

LL Form 8 BlueKote® Conduit Bodies



CAT. NO.	HUB SIZE	DIMENSIONS (IN.)					CU. IN.
		A	B	C	D	E	
LL18	½"	4.94	1.44	2.13	1.00	3.31	4.9
LL28	¾"	5.56	1.69	2.31	1.19	3.94	8.0
LL38	1"	6.47	1.94	2.63	1.38	4.56	13.0
LL448	1¼"	7.53	2.38	3.16	1.75	5.31	23.5
LL58	1½"	9.13	2.78	4.00	2.13	6.50	45.0
LL68	2"	11.00	3.56	5.00	3.00	8.56	88.0
LL78	2½"	13.94	4.44	6.69	4.25	10.88	110.0
LL888	3"	13.94	4.81	6.69	4.25	10.88	110.0

LL Series 35 Conduit Bodies



CAT. NO.	HUB SIZE	DIMENSIONS (IN.)			CU. IN.
		A	B	C	
LL50M	½"	4.68	2.05	1.37	4.5
LL75M	¾"	5.37	2.25	1.70	7.5
LL100M	1"	6.20	2.65	1.90	12.5
LL125M	1¼"	8.12	2.75	2.75	32
LL150M	1½"	8.12	3.50	2.83	33
LL200M	2"	10.50	4.12	3.31	68
LL250M	2½"	13.60	5.71	3.90	142
LL300M	3"	13.87	5.87	4.75	173
LL350M	3½"	16.50	7.13	6.81	292
LL400M	4"	16.50	7.13	7.19	324

LL Threaded Aluminum Conduit Bodies



CAT. NO.	HUB SIZE	DIMENSIONS (IN.)								CU. IN.	CU. IN.*
		A	B	C	D	E	F	G	H		
ALL1	½"	3.88	3.50	4.31	1.31	1.38	3.56	2.00	.78	4.3	4.8
ALL2	¾"	4.63	4.13	5.13	1.53	1.63	4.13	2.31	.88	7.3	7.5
ALL3	1"	5.38	4.88	5.31	1.75	1.88	4.88	2.50	1.00	11.8	12.5
ALL4	1¼"	7.25	6.50	7.88	2.50	2.75	6.31	3.38	1.50	32.0	36.5
ALL5	1½"	7.25	6.50	7.88	2.50	2.75	6.31	3.38	1.50	32.0	36.5
ALL6	2"	9.50	8.56	10.19	3.13	3.44	8.19	3.94	1.94	69.5	73.8
ALL7	2½"	12.25	11.25	13.00	4.50	4.50	10.25	5.50	2.88	190.0	—
ALL8	3"	12.25	11.25	13.00	4.50	4.50	10.25	5.50	2.88	190.0	—
ALL9	3½"	15.00	14.44	16.25	5.50	5.50	12.75	6.50	3.00	366.0	—
ALL10	4"	15.00	14.44	16.25	5.50	5.50	12.75	6.50	3.00	366.0	—

*LRL Style Only

LL EMT Aluminum Conduit Bodies



CAT. NO.	HUB SIZE	DIMENSIONS (IN.)								CU. IN.	CU. IN.*
		A	B	C	D	E	F	G	H		
BLL1	½"	3.88	3.50	4.31	1.31	1.38	3.56	2.00	.78	4.3	4.8
BLL2	¾"	4.63	4.13	5.13	1.53	1.63	4.13	2.31	.88	7.3	7.5
BLL3	1"	5.38	4.88	5.31	1.75	1.88	4.88	2.50	1.00	11.8	12.5
BLL4	1¼"	7.25	6.50	7.88	2.50	2.75	6.31	3.38	1.50	32.0	36.5

*LRL Style Only